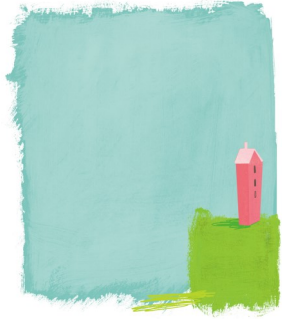


OUR AIM

To coordinate a high quality child and family centred service, promoting social inclusion and empowering the child, family and wider community through education, training and support.

The Children's Continuing Care Team



The Children's Continuing Care Team

KITE Department
Royal Derby Hospital
Uttoxeter Road
Derby
DE22 3NE

OUR PURPOSE

To facilitate the wishes of children with complex care needs, to live at home, go to school, spend time with friends and participate in community activities with friends and peers.



WHO ARE WE?

The Children's Continuing Care Team is a team of experienced children's nurses and family support workers. We provide care for children with complex health needs at home and in the community.



We are based in the KITE Department at the Royal Derby Hospital and provide care for children in Derby City and Derbyshire.

HOW TO CONTACT THE TEAM

Monday-Friday 9am-5pm

Direct Line: 01332 786917



Each child will be referred to our service by the Children's Continuing Care Case Manager.

Once this referral has been made, each family will be allocated a named nurse within the team to coordinate their child's care.

WHAT SERVICES DO WE PROVIDE?

Coordinating the discharge of children with complex health needs from hospital to home.

Development of individualised care packages.

Comprehensive training and assessment of all staff.

Support and skills teaching for parents.

Liaising with schools, nurseries and other agencies.

Referring to other services that may be beneficial for the child and family.

Being an advocate for the child and their family.